



Sceris®



ETCETERA® EPM

Enterprise Process Management

AUI Designer

APPLICATION USER INTERFACE DESIGNER

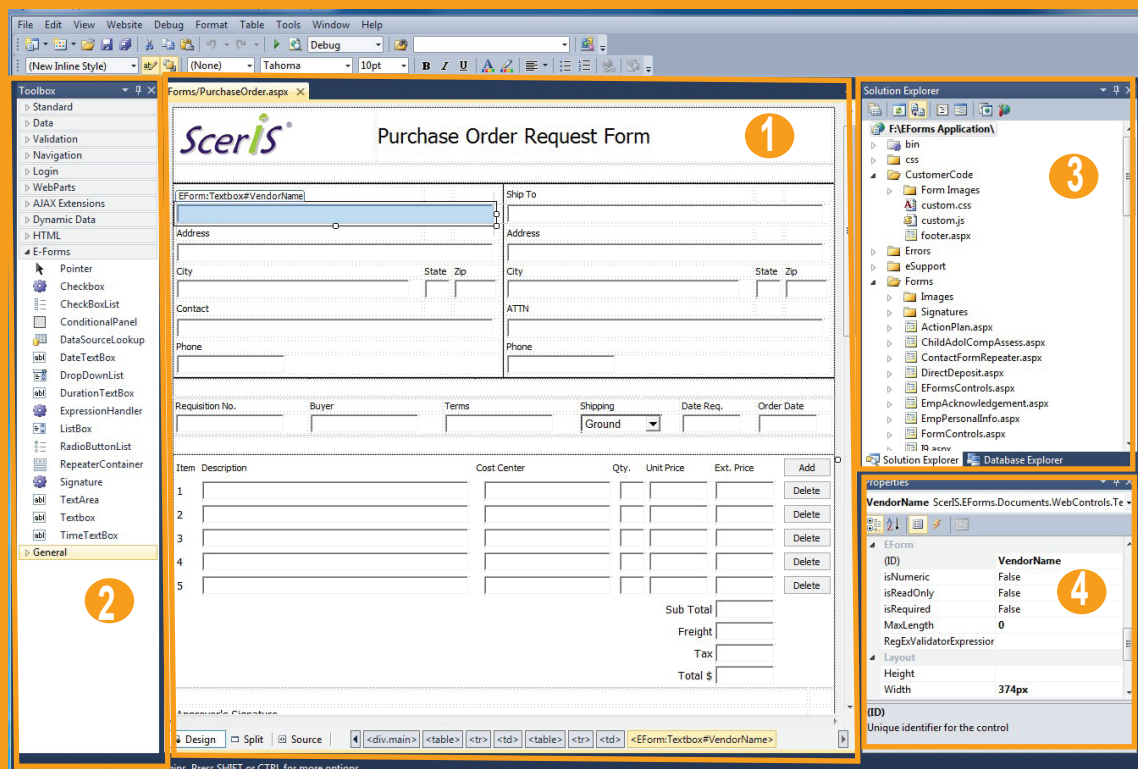
Designer (**Designer**) is used to develop Application User Interfaces (AUIs). AUIs are graphical user interfaces within which information is presented, collected and shared through on-line processes.

Designer is a drag and drop design tool using Microsoft Visual Studio along with ScerIS-developed custom controls that helps accelerate application development and delivers breakthrough user experiences. Designer provides for a simple, but highly customizable and extensible GUI design process and provides an extraordinary, easy to use, set of controls for both technical and non-technical users.

In this truly robust environment, AUIs are developed where data is enhanced and validated through the use of database lookups, dynamic selection lists, time and date controls, spell check, conditional rules and dynamic form elements. Electronic and digital signatures can be added to allow for secure and verifiable processes.

Designer includes predefined Standard Controls, Advanced Controls, Electronic and Digital Signature Controls, and an extensive array of Control Properties (currently over 75) to facilitate rapid and easy prototyping, testing and deployment of AUIs.

Example of the AUI Development Environment



1. The **Document Frame** is the main window for creating, viewing, and editing the AUI.
2. The **Toolbox** contains a list of controls available for designing AUIs.
3. The **Solution Explorer** gives a view of all the existing application files available.
4. The **Control Properties Frame** shows the individual properties for any control, such as size, validation properties and data element names.

CONTROLS & PROPERTIES

Standard Controls

Designer includes a selection of Predefined Standard Controls enabling users to accommodate most design challenges using a drag and drop, point and click methodology.

The controls are easy to use and intuitive. All of the programming necessary to manage each field placed on the AUI is already in the control. No programming is necessary for the standard predefined controls used by non-technical people to create AUIs.

Standard configuration attributes of these controls include field naming, data validation, and field presentation.

Predefined Advanced Controls

Designer includes a selection of Predefined Advanced Controls enabling users to implement highly customized features into the AUIs and data capture requirements.

These predefined advanced controls enable data validations (no limit on the number of data sources used per AUI), expression based field completion, dynamic presentation of additional sections or required fields based on rules or conditions applied to other fields and dynamic expansion by the user of sections on the AUI in order to accommodate the exact number of sections and sub sections required in their work (for up to four levels of repeating sections).

Predefined Electronic and Digital Signature Controls

Designer includes Predefined Signature Controls that enable a user to capture either a written signature or a signature using network authentication or ScerIS user authentication.

Signatures can lock or bind to other controls in the Application User Interface (AUI) as determined by the AUI designer. These controls are bound to the other controls in such a way that any change to any data values in the controls will negate the signature.

Written signatures are captured with their biometrics (depending on the capability of the signature pad). Biometrics typically include capturing the user's handwritten signature's strokes, speed, pressure and timing.

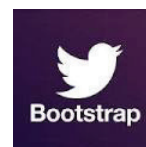
Control Properties

Over 75 Control Properties provide for a simple but highly customizable and extensible AUI design process. Control Properties make this a truly rich user experience because they simplify the implementation of predefined controls and AUIs.

Many Control Properties are specific to certain predefined controls, such as "Controls_to_sign" which is a property that lists the Control IDs (representing fields on the AUI) that the signature control is bound to. Many of the Control Properties apply to nearly all controls. AUI designers can specify the Control ID, name fields, select font controls, validate field properties, specify colors and borders, provide tables or views, specify values to output for some controls (like check box controls), specify fields in data sources and much more.

Microsoft Partner

Gold Application Development

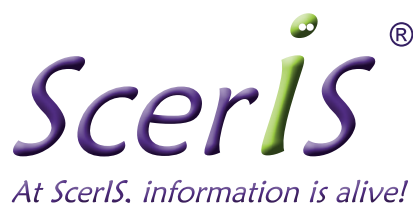


About ScerIS

ScerIS is a resource to its customers for Big Impact solutions and services. Founded in 1993, the company's focus is to help customers retool business processes, automate people centric work, improve workforce productivity and utilize key performance indicators that help position them for increased profitability.

ScerIS is a resource to its customers in healthcare, financial services, business and government. Serving 16 major markets and over 100 industries, ScerIS provides Business Process Improvement Solutions, Business Intelligence Reporting and Data Analytics Tools, Mobile Workforce Solutions, Custom System Design, Implementation Services & Business Process Outsourcing.

ScerIS is the software developer of ETCETERA®, the platform for business process improvement, content management, business intelligence and data analysis. ScerIS also provides Managed Cloud Services, Professional Services and Outsourced Services rounding out its value to customers.



Corporate Office
201 Boston Post Road West
Suite 102
Marlborough, MA 01752
(978) 218-5000
www.sceris.com

© 2024 ScerIS, Inc. Information in this document is subject to change without notice; please contact ScerIS directly for the most up-to-date corporate and product information. Microsoft, Windows Server, Microsoft SQL, .NET, IIS and Microsoft Visual Studio Professional are registered trademarks of Microsoft Corporation. Twitter and Twitter Bootstrap are registered trademarks of Twitter, Inc. JavaScript framework and AngularJS by Google are registered trademarks of Google, Inc. All other trademarks or registered trademarks are the property of their respective owners.